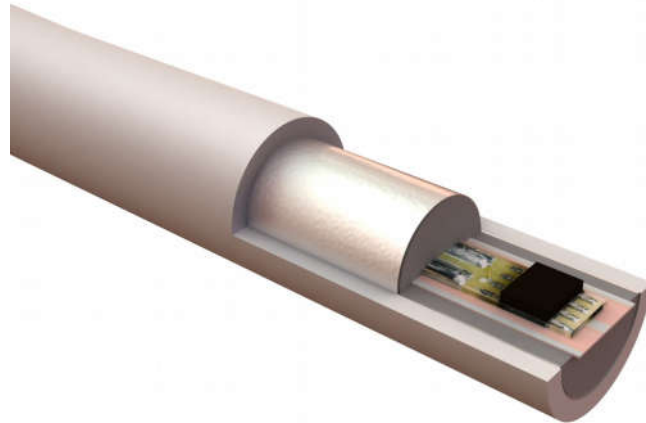


# Sensor Cable SEC 15



## Features

- ◆ Complete encapsulation to protect sensors from environmental influences
- ◆ Sensor spacing selectable to comply to project demand
- ◆ Pinpoint sensor location via individual addresses
- ◆ Maintenance free cable
- ◆ Aramid fibres serve as strain relief and as reinforcement in case of fire
- ◆ Easy mounting by use of diverse fasteners
- ◆ Branching of cable routes via connection boxes
- ◆ To be used with sensor control unit **SCU 800**
- ◆ May be combined with d-LIST external sensors **ESD**
- ◆ Quick cable repair in case of mechanical damage
- ◆ Up to 2 x 250 m combined cable length, respectively up to 2 x 99 sensors per sensor control unit **SCU 800**

## General Data

- ◆ Operating temperature: -40 °C ... +85 °C, up to +120 °C short term
- ◆ Cable diameter: Typ. 15 mm
- ◆ Flat conductor resistance: Typ. 71 Ω / km (single conductor)
- ◆ Sheath material: HM4 mixture, halogen-free and flame retardant, according to EN 50267-2-1:1999-04, EN50267-2-2:1999-04, EN 60332-1-2:2005-06, EN 60332-2-2:2005-06, EN 61034-2:2006-03, IEC 60754-1, IEC 60754-2
- ◆ Weight: Typ. 0,35 kg / m
- ◆ Sheath colour: Grey or black
- ◆ Marking: Consecutive number printed at each sensor location, followed by cable identifier
- ◆ Deliverable cable length: Up to 2.400 m, prefabricated cable sections on request
- ◆ Mounting temperature: ≥ +10 °C
- ◆ Bending radius: ≥ 25 cm
- ◆ Verified and approved to: EN 54-5, class A1, VdS no.: G 205143

## Sensor Specification

- ◆ Measurement range: -40 °C ... +120 °C
- ◆ Measurement resolution: 0,1 °C
- ◆ Repeatability: ± 0,1 K
- ◆ Supply voltage: 5 V DC via sensor control unit **SCU 800**

## Ordering Information

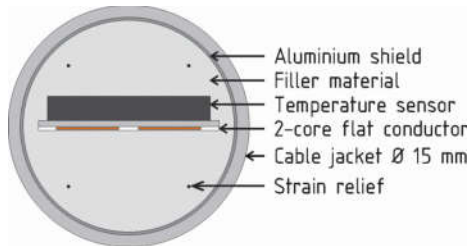
- |  |                         |
|--|-------------------------|
| ◆ <b>Sensor Cable SEC 15/01</b> (1 m sensor spacing)   | Art.-no.: <b>G00360</b> |
| ◆ <b>Sensor Cable SEC 15/02</b> (2 m sensor spacing)   | Art.-no.: <b>G00367</b> |
| ◆ <b>Sensor Cable SEC 15/03</b> (3 m sensor spacing)   | Art.-no.: <b>G00372</b> |
| ◆ <b>Sensor Cable SEC 15/04</b> (4 m sensor spacing)   | Art.-no.: <b>G00374</b> |
| ◆ <b>Sensor Cable SEC 15/05</b> (5 m sensor spacing)   | Art.-no.: <b>G00376</b> |
| ◆ <b>Sensor Cable SEC 15/xx</b> (Customer specified sensor spacing, limited to not less than 0,25 m) | Art.-no.: <b>G00378</b> |

## Scope of Delivery

- ◆ Ordered sensor cable length may be shipped as a cable ring in a carton, on a one way drum, or on loaner KTG-drum and pallet.

**Cable Construction**

- ◆ Two-core flexible flat cable with temperature sensors
- ◆ Filler material with strain relief
- ◆ Aluminium foil shield
- ◆ Sheath with imprints at each sensor location



**Cable Imprint**

**Imprint 1:** The sensor marking is used in cable lists, delivery notes etc.

xxx \* d-LIST-Sensorkabel \* Dyyyzz \* Listec GmbH \* Nexans \* VdS Nr. G 205143 \*

Both imprints start on the same level

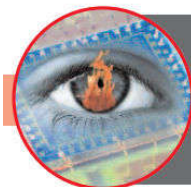
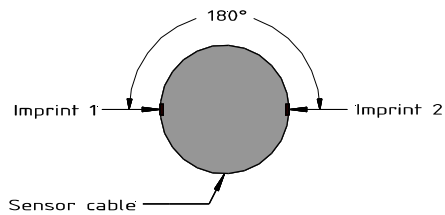
\*\*\*\*\* d-LIST Sensor Cable SEC 15 \*\*\*\*\* d-LIST Sensor Cable SEC 15 \*\*\*\*\*

**Imprint 2:** Static marking only.

Every block with 5 x \*

**Legend:**

- xxx:** Sensor position in the cable, three-digit consecutive sensor marking, (four-digit for **SEC 15/01** and **SEC 15/02**)
- yyy:** Three-digit cable number
- zz:** Sensor spacing (i.e.: 04 = 4 m)



FireSense Benelux  
Stammerkamp 19  
1112 VE DIEMEN  
The Netherlands

T +31 (0)20 669 41 90  
F +31 (0)20 669 18 52

E info@firesense.nl  
I www.firesense.nl