

# SLM 35

## SecuriLine® module for ASD 535

From production number 060608 and SW version 04.00.00

- Software versions:
- ASD 535 From 01.01.01
  - SecuriPro® From 02.00
  - Integral From 6.1

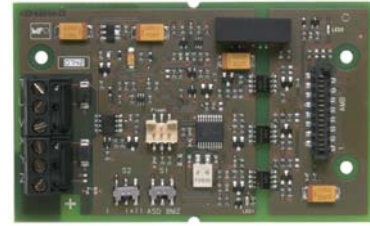


Fig. 1 SLM 35

The SLM 35 is an extension module for connecting the ASD 535 aspirating smoke detector to the SecuriPro® and Integral fire detection systems ring circuit.

### Description

With the installation of an SLM 35 SecuriLine® module, the ASD 535 aspirating smoke detector can be ideally connected via the ring circuit to the SecuriPro® and Integral fire detection systems. Controls and simple changes to the ASD device configuration can thus be performed directly from the FACP.

### Mounting / Installation

There are four expansion slots for mounting the optional expansion modules in the detector box of the ASD 535.

In the installation set of the SLM 35 there are module holders, retaining screws and the connection cable (ribbon cable) for connecting to the AMB 35 (see Fig. 2).

The SLM 35 SecuriLine® module is connected to Option1 (or Option2).

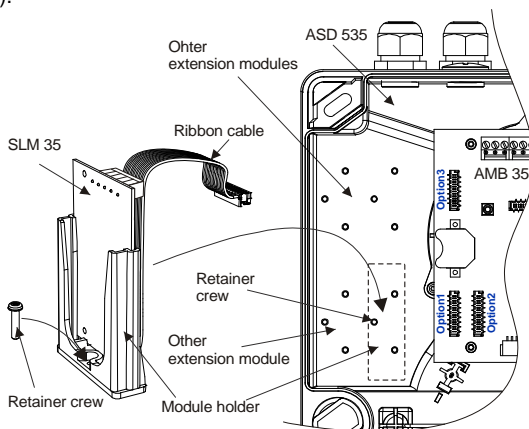


Fig. 2 Installing the SLM 35

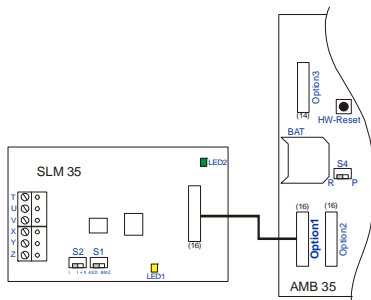


Fig. 3 Wiring the SLM 35

### Programming

The response sensitivity of the smoke sensors ( $\pm 20\%$  of the value set on the ASD) as well as the sensitivity and delay period of the airflow monitoring can be re-programmed on the ASD 535 via the user interface of the fire detection system (only active in the switch settings X01 to X03), see Technical Description T 131 192, section 7.4.3).



Re-programming from the SecuriPro® or Integral fire detection system may result in non-compliance with EN 54-20. Any adaptations or modifications to the ASD 535 from the SecuriPro® or Integral fire detection system to level "low" may be performed only by the manufacturer or by qualified persons trained by the manufacturer.

The SLM 35 has two switches (S1 and S2) with the following meaning:

Switch S1	ASD / FACP operation access
ASD position	Re-programming is possible only on the ASD; state query is possible from FACP
BMZ position	Re-programming and state query possible from FACP and ASD
Switch S2	Number of smoke sensors in the ASD
Position I	ASD 535-1, -3 with 1 smoke sensor, on the FACP only as one zone
Position I + II	ASD 535-2, -4 with 2 smoke sensors, on the FACP side as V-AI / H-AI or AI zone A / AI zone B

### Displays

Two LEDs on the SLM 35 indicate the communication state between AMB, MCM and the ring circuit.

<b>LED 1 (yellow)</b>	<b>State SLM 35 &lt;-&gt; ring circuit (lights only if supply from AMB is Ok)</b>
Not lit	No ring circuit voltage
Continuously lit	Ring circuit voltage Ok, no communication SLM <-> Line
Flashes (normal operation)	Communication SLM <-> Line Ok
<b>LED 2 (green)</b>	<b>State ASD 535 &lt;-&gt; SLM 35</b>
Not lit	No power supply from AMB 35
Flashes (normal operation)	Supply from AMB 35 Ok, communication SLM <-> ASD Ok

# Data sheet

## Commissioning

The SLM 35 is automatically detected when the device is switched on and monitored from then on. If the SLM is subsequently removed (e.g. because it is not used), it must be logged off via the control unit on the AMB 35 [Main board](#) (see Technical Description T 131 192, section 7.3.7).

## Terminal assignment

Terminal	Signal	SecuriLine®	Integral
T	Data A	T	L2
U	GND A	U	C2
V	Screen	C (screen)	G2
X	Data B	X	L1
Y	GND B	Y	C1
Z	Screen	C (screen)	G1

## Maximum connectable SLM 35 units

(see also notice box below)

per SecuriLine® 50 units  
per Integral ring circuit 32 units



- When operating an ASD 535-2 and ASD 535-4 (with 2 smoke sensors), two addresses are allocated on the SLM 35.
- The circuitry and wiring routing between SLM 35 and the FACP SecuriPro® or Integral must be carried out as shown in the Technical Description T 131 192, section 6 (X on X, Y on Y or X on L1, Y on C1, etc.).

## Technical data

Type	SLM 35	
Operating voltage from AMB 35	5	V-DC
Maximum current consumption	20	mA
Ambient conditions acc. to IEC 721-3-3 / EN 60721-3-3 (1995)	3K5 / 3Z1	Class
Extended ambient conditions:		
• SLM 35 temperature range	-30 – +60	°C
• Max. permitted storage temperature (without condensation)	-30 – +70	°C
• Humidity ambient condition (transient without condensation)	95	% rel/F
• Humidity ambient condition (continuous)	70	% rel/F
Plug-in terminals	2.5	mm <sup>2</sup>
Dimensions (H x W x D)	95 x 58 x 17	mm
Weight (including module holder)	56	g

## Dimensional drawing

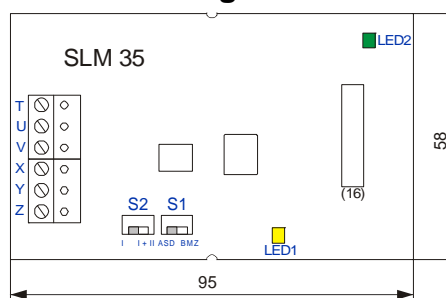


Fig. 4 SLM 35 dimensional drawing

## Article numbers / spare parts

Brief description	Article number
SLM 35, incl. installation set	4000286.0101
Technical description ASD 535	T 131 192
Application guidelines for refrigerated warehouses	T 131 390
Data sheet ASD 535	T 131 193
Integration description on SecuriPro®	T 131 218